


Welcome to


Energy Production Systems Engineering



Thomas Blair, P.E.
USF Polytechnic – Engineering
tom@thomasblairpe.com

Session 2: Electrical Safety & Steam Plant Fundamentals

Spring 2012



Session 2: Electrical Safety & Steam Plant Fundamentals

- Electrical Installation Safety Requirements
- Electrical Safe Work Practices
- Steam Plant Fundamentals

USF UNIVERSITY OF SOUTH FLORIDA POLYTECHNIC

Energy Production Engineering
Thomas Blair, P.E.
(tom@thomasblairpe.com)

Electrical Safety

Installation Safety Requirements

USF UNIVERSITY OF SOUTH FLORIDA POLYTECHNIC

Energy Production Engineering
Thomas Blair, P.E.
(tom@thomasblairpe.com)

Engineering Methods of Reducing Hazard Risk

- Specifying Current Limiting Fuses on Low Voltage Switchgear Breakers
- IR detectors / IOC relays / Pressure relays in switchgear
- Dual Setting relays
- Specifying ARC Resistant Switchgear
- Remote Control of Switchgear Breakers
- Remote Racking of Switchgear Breakers
- High Resistance Grounding on Low Voltage and Medium Voltage (15kV and below) Systems
- Differential & Zone protection
- Others???


4

USF UNIVERSITY OF SOUTH FLORIDA POLYTECHNIC

Energy Production Engineering
Thomas Blair, P.E.
(tom@thomasblairpe.com)

Arc Flash

Aftermath of arc flash event.




5

USF UNIVERSITY OF SOUTH FLORIDA POLYTECHNIC

Energy Production Engineering
Thomas Blair, P.E.
(tom@thomasblairpe.com)

Common Electrical Task

IEEE Arc Flash Test



Copyright IEEE, with special permission to Cooper Bussmann

6

USF UNIVERSITY OF SOUTH FLORIDA POLYTECHNIC

Energy Production Engineering
Thomas Blair, P.E.
(tom@thomasblairpe.com)

Slow Motion Text



7



Energy Production Engineering
Thomas Blair, P.E.
(tom@thomasblairpe.com)

Safer Engineering Design

Current Limiting Fuses = faster clearing time.



Copyright IEEE, with special permission to Güöper Bussmann

8



Energy Production Engineering
Thomas Blair, P.E.
(tom@thomasblairpe.com)

Its not just the front of the switchgear!



9



Energy Production Engineering
Thomas Blair, P.E.
(tom@thomasblairpe.com)

Flash Boundary

$$D_c = [2.65 * MVA_{bf} * t]^{1/2}$$

D_c = 2nd degree burn distance

MVA_{bf} = bolted fault at point of arc

t = clearing time

10



Energy Production Engineering
Thomas Blair, P.E.
(tom@thomasblairpe.com)

Flash Boundary

$$D_c = [53 * MVA * t]^{1/2}$$

D_c = 2nd degree burn distance (ft)

MVA = Transformer MVA rating

t = clearing time (sec)

(alternate formula)

$$D_c = [2.65 * MVA_{bf} * t]^{0.5}$$

MVA_{bf} = bolted fault MVA at point of fault.

11



Energy Production Engineering
Thomas Blair, P.E.
(tom@thomasblairpe.com)

Personal Protective Equipment

PPE for Shock Protection

PPE for Thermal Protection from Arc

12



Energy Production Engineering
Thomas Blair, P.E.
(tom@thomasblairpe.com)

PPE

PPE shall be provided and used
 Shall be inspected prior to each use



Act: Wear in protective clothing and gear as he inserts a starter socket into a Motor Control Center.

13



Energy Production Engineering
 Thomas Blair, P.E.
 (tom@thomasblairpe.com)

Hazard Risk Category Table 130.7(C)(9)(a)

Table defines HRC (arc flash protection) and Gloves/Tools (shock protection) required. Task specific

Table 130.7(C)(9)(a) Hazard/Risk Category Classifications

Task (Assumes Equipment Is Energized, and Work Is Done Within the Flash Protection Boundary)	Hazard/Risk Category	V-rated Gloves	V-rated Tools
Panboards Rated 240 V and Below — Notes 1 and 3			
Circuit breaker (CB) or fused switch operation with covers on	0	N	N
CB or fused switch operation with covers off	0	N	N
Work on energized parts, including voltage testing	1	Y	Y
Removal/install CBs or fused switches	1	Y	Y
Removal of bolted covers (to expose bare, energized parts)	1	N	N
Opening hinged covers (to expose bare, energized parts)	0	N	N

14



Energy Production Engineering
 Thomas Blair, P.E.
 (tom@thomasblairpe.com)

Table Notes

- 1. Maximum of 25 kA short circuit current available, 0.03 second (2 cycle) fault clearing time.
- 2. Maximum of 65 kA short circuit current available, 0.03 second (2 cycle) fault clearing time.
- 4. Maximum of 42 kA short circuit current available, 0.33 second (20 cycle) fault clearing time.
- 5. Maximum of 35 kA short circuit current available, 0.5 second (30 cycle) fault clearing time.

15



Energy Production Engineering
 Thomas Blair, P.E.
 (tom@thomasblairpe.com)

Ancillary Protective Equipment

- Tools
- Temporary grounds
- Rubber insulating equipment
- Barriers
- Inspection and maintenance

16



Energy Production Engineering
 Thomas Blair, P.E.
 (tom@thomasblairpe.com)

PPE matrix

NFPA70E defines what PPE required for what HRC
 Table 130.7(C)(10) Protective Clothing and Personal Protective Equipment (PPE) Matrix

Protective Clothing and Equipment Hazard/Risk Category Number	Protective Systems for Hazard/Risk Category					
	-1 (Note 3)	0	1	2	3	4
Non-melting (according to ASTM F 1249-00) or Untreated Natural Fiber						
a. T-shirt (short-sleeve)	X			X	X	X
b. Shirt (long-sleeve)	X	X		X	X	X
c. Pants (long)			X	X	X	X
(Note 4) (Note 6)						
FR Clothing (Note 1)						
a. Long-sleeve shirt		X	X	X	X	X
b. Pants			X	X	X	X
c. Coverall			(Note 4) (Note 5) (Note 7)	X	(Note 5) (Note 9)	X
d. Jacket, parka, or rainwear			AN	AN	AN	AN

17



Energy Production Engineering
 Thomas Blair, P.E.
 (tom@thomasblairpe.com)

Protective Clothing Characteristics

From NFPA70E

Hazard risk category	Description	Min arc rating Cal/cm ²
0	Non-melting flammable	N/A
1	FR shirt/pant or FR coverall	4
2	Cotton underwear + FR shirt/pant	8
3	Cotton underwear + FR shirt & pants + FR coveralls	25
4	Cotton underwear + FR shirt & pants + FR coverall	40

18



Energy Production Engineering
 Thomas Blair, P.E.
 (tom@thomasblairpe.com)

PPE examples



Troubleshooting live equipment, such as testing a contactor (left), requires hazard/risk level 2 PPE, suitable for protection from an arc flash of 8 cal/cm², but racking of a circuit breaker (right) demands hazard/risk level 3 PPE, suitable for protection from an arc flash of 25 cal/cm².

19



Energy Production Engineering
Thomas Blair, P.E.
(tom@thomasblairpe.com)

Alerting Techniques

Safety signs and tags
Barricades outside Limited Approach Boundary
How about if arc boundary > limited approach boundary?
Attendants

20



Energy Production Engineering
Thomas Blair, P.E.
(tom@thomasblairpe.com)

Electrical Safety – Safe work practices



21



Energy Production Engineering
Thomas Blair, P.E.
(tom@thomasblairpe.com)

End of Electrical Safety



Energy Production Engineering
Thomas Blair, P.E.
(tom@thomasblairpe.com)

Steam Plant Fundamentals



Energy Production Engineering
Thomas Blair, P.E.
(tom@thomasblairpe.com)

Steam Plant Fundamentals

Download Steam table &/or software
Homework review – Question two out
How was homework easy or hard?
Syllabus Update – No session next week
Tour Optional
Homework 2 guidance
- Nuclear SG = Saturated Steam
- If substance subcooled, used T-s plot or software,
table will not work
Questions?

24



Energy Production Engineering
Thomas Blair, P.E.
(tom@thomasblairpe.com)

Steam Plant Fundamentals

Temperature – Average Molecular KE
 Steam cycle (Thermodynamics)
 Temperature (hot to cold)

$$TR = TF + 460$$

$$TK = TC + 273$$

Use R (or K) for engineering calculations

25



Energy Production Engineering
 Thomas Blair, P.E.
 (tom@thomasblairpe.com)

Steam Plant Fundamentals

Pressure – force per unit area
 Pisa – P_{sig} – “hg – Pa – Torr - % Vacuum

26



Energy Production Engineering
 Thomas Blair, P.E.
 (tom@thomasblairpe.com)

Steam Plant Fundamentals

% Vacuum	Torr (mm Mercury)	Micron	psia, (lbf/in ²) abs.	Inches Mercury Absolute	Inches Mercury Gauge	kPa abs
0	760	760,000	14.7	29.92	0	101.4
1.3	750	750,000	15.5	29.5	0.42	99.9
1.9	735.6	735,600	14.2	28.9	1.02	97.7
7.9	700	700,000	13.5	27.6	2.32	93.5
21	600	600,000	11.6	23.6	6.32	79.9
34	500	500,000	9.7	19.7	10.22	66.7
47	400	400,000	7.7	15.7	14.22	53.2
50	380	380,000	7.3	15	14.92	50.8
61	300	300,000	5.8	11.8	18.12	40
74	200	200,000	3.9	7.85	22.07	26.6
87	100	100,000	1.93	3.94	25.98	13.3
89.5	80	80,000	1.55	3.15	26.77	10.7
93	51.7	51,700	1	2.03	27.89	6.9
96.1	30	30,000	0.58	1.18	28.74	4
97.4	20	20,000	0.39	0.785	29.14	2.7
98.7	10	10,000	0.193	0.394	29.53	1.3
99	7.6	7,600	0.147	0.299	29.62	1
100	0	0	0	0	29.92	0

27



Energy Production Engineering
 Thomas Blair, P.E.
 (tom@thomasblairpe.com)

Steam Plant Fundamentals

Density – mass per unit volume (lbm/ft³)
 Specific Volume is 1/D

Specific Heat – Heat transferred / temperature change (per unit mass)

28



Energy Production Engineering
 Thomas Blair, P.E.
 (tom@thomasblairpe.com)

Steam Plant Fundamentals

Sensible Heat – Heat added (or removed) that changes temperature

Latent Heat – Heat added (or removed) that changes phase

29



Energy Production Engineering
 Thomas Blair, P.E.
 (tom@thomasblairpe.com)

Steam Plant Fundamentals

Three modes of heat transfer –
 Conduction
 Convection
 Radiation

30



Energy Production Engineering
 Thomas Blair, P.E.
 (tom@thomasblairpe.com)

Steam Plant Fundamentals

Conduction is the transfer of energy through matter from particle to particle. It is the transfer and distribution of heat energy from atom to atom within a substance. Conduction is most effective in solids-but it can happen in fluids.

31



Energy Production Engineering
Thomas Blair, P.E.
(tom@thomasblairpe.com)

Steam Plant Fundamentals

Convection is the transfer of heat by the actual movement of the warmed matter. Convection is the transfer of heat energy in a gas or liquid by movement of currents. (It can also happen in some solids.) The heat moves with the fluid.

32



Energy Production Engineering
Thomas Blair, P.E.
(tom@thomasblairpe.com)

Steam Plant Fundamentals

Radiation: Electromagnetic waves that directly transport ENERGY through space (no medium needed for heat transfer).

33



Energy Production Engineering
Thomas Blair, P.E.
(tom@thomasblairpe.com)

Steam Plant Fundamentals

Enthalpy – total useful energy in substance (BTU/lbm)

Includes internal & flow energy

$$h = (u + p*v)/J$$

Entropy – energy not available for work (BTU/lbm*R)

34



Energy Production Engineering
Thomas Blair, P.E.
(tom@thomasblairpe.com)

Steam Plant Fundamentals

States – solid – liquid – gas

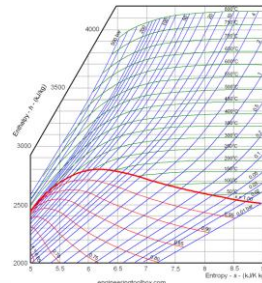
Value of h defined by properties of material.

35



Energy Production Engineering
Thomas Blair, P.E.
(tom@thomasblairpe.com)

Steam Plant Fundamentals



Mollier Diagram

Blue = Pressure

Green =
Temperature

Red =
Quality

36



Energy Production Engineering
Thomas Blair, P.E.
(tom@thomasblairpe.com)

Steam Plant Fundamentals

T-S Diagram

Lines of constant P

4 regions

- B = 0% quality
- A = 50% quality
- C = 100% quality

Critical point

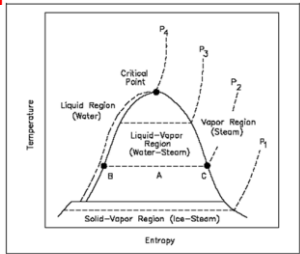


Figure 13 T-s Diagram for Water

37

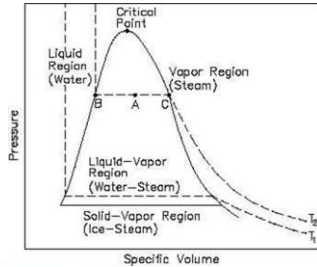


Energy Production Engineering
Thomas Blair, P.E.
(tom@thomasblairpe.com)

Steam Plant Fundamentals

P-v Diagram

Lines of constant T



38



Energy Production Engineering
Thomas Blair, P.E.
(tom@thomasblairpe.com)

Steam Plant Fundamentals

Steam Tables – Download Available at
Class website
thomasblairpe.com/pp.html

Steam Property Software – Link to software available at
class website
thomasblairpe.com/pp.html

39



Energy Production Engineering
Thomas Blair, P.E.
(tom@thomasblairpe.com)

Steam Plant Fundamentals

Steam Tables – Saturated & Superheated Steam sections

First for Saturated section – How to use:

40



Energy Production Engineering
Thomas Blair, P.E.
(tom@thomasblairpe.com)

Steam Plant Fundamentals

Table 1. Saturated Steam: Temperature Table

Temp Fahr t	Abs Press. Lb per Sq In. p	Specific Volume		
		Sat. Liquid v _f	Evap v _{fg}	Sat. Vapor v _g
32.0*	0.08859	0.016022	3304.7	3304.7
34.0	0.098600	0.016021	3061.9	3061.9
36.0	0.11395	0.016020	2839.0	2839.0
38.0	0.11249	0.016019	2634.1	2634.2

- Temperature (°F)
- Abs Press (psia)
- v_f = 0% quality Specific Volume
- v_g = 100% quality Specific Volume
- v_{fg} = Specific Volume difference between v_g and v_f

41



Energy Production Engineering
Thomas Blair, P.E.
(tom@thomasblairpe.com)

Steam Plant Fundamentals

Table 1. Saturated Steam: Temperature Table

Enthalpy			Entropy			Temp Fahr t
Sat. Liquid h _f	Evap h _{fg}	Sat. Vapor h _g	Sat. Liquid s _f	Evap s _{fg}	Sat. Vapor s _g	
-0.0179	1075.5	1075.5	0.0000	2.1873	2.1873	32.0**
1.996	1074.4	1076.4	0.0041	2.1762	2.1802	34.0
4.008	1073.2	1077.2	0.0081	2.1651	2.1732	36.0
6.018	1072.1	1078.1	0.0122	2.1541	2.1663	38.0

- Entropy (BTU/(lbm * °F))
- h_f = 0% quality Enthalpy
- h_g = 100% quality Enthalpy
- s_{fg} = Enthalpy difference between s_g and s_f

42



Energy Production Engineering
Thomas Blair, P.E.
(tom@thomasblairpe.com)

Steam Plant Fundamentals

Table 1. Saturated Steam: Temperature Table

Enthalpy			Entropy			Temp Fahr t
Sat. Liquid h _f	Evap h _{fg}	Sat. Vapor h _g	Sat. Liquid s _f	Evap s _{fg}	Sat. Vapor s _g	
-0.0179	1075.5	1075.5	0.0000	2.1873	2.1873	32.0*
1.996	1074.4	1076.4	0.0041	2.1762	2.1802	34.0
4.008	1072.2	1077.2	0.0081	2.1651	2.1732	36.0
6.018	1072.1	1078.1	0.0122	2.1541	2.1663	38.0

Enthalpy (BTU/lbm)
 hf = 0% quality Enthalpy
 hg = 100% quality Enthalpy
 hfg = Enthalpy difference between hg and hf
 This is used to determine available energy in fluid

43



Energy Production Engineering
 Thomas Blair, P.E.
 (tom@thomasblairpe.com)

Steam Plant Fundamentals

Table 1. Saturated Steam: Temperature Table

Enthalpy			Entropy			Temp Fahr t
Sat. Liquid h _f	Evap h _{fg}	Sat. Vapor h _g	Sat. Liquid s _f	Evap s _{fg}	Sat. Vapor s _g	
-0.0179	1075.5	1075.5	0.0000	2.1873	2.1873	32.0*
1.996	1074.4	1076.4	0.0041	2.1762	2.1802	34.0
4.008	1072.2	1077.2	0.0081	2.1651	2.1732	36.0
6.018	1072.1	1078.1	0.0122	2.1541	2.1663	38.0

Enthalpy (BTU/lbm) for percent quality is:

$$H = hf + hfg * (\%Quality/100\%)$$

44



Energy Production Engineering
 Thomas Blair, P.E.
 (tom@thomasblairpe.com)

Steam Plant Fundamentals

Table 1. Saturated Steam: Temperature Table

Enthalpy			Entropy			Temp Fahr t
Sat. Liquid h _f	Evap h _{fg}	Sat. Vapor h _g	Sat. Liquid s _f	Evap s _{fg}	Sat. Vapor s _g	
-0.0179	1075.5	1075.5	0.0000	2.1873	2.1873	32.0*
1.996	1074.4	1076.4	0.0041	2.1762	2.1802	34.0
4.008	1072.2	1077.2	0.0081	2.1651	2.1732	36.0
6.018	1072.1	1078.1	0.0122	2.1541	2.1663	38.0

Example above, for fluid at 38 °F,
 hf = 6.018 (BTU/lbm)
 hg = 1072.1 (BTU/lbm)
 h(50% Quality) =
 6.018 + 1072.1 * (50/100) =
 542 (BTU/lbm)

45



Energy Production Engineering
 Thomas Blair, P.E.
 (tom@thomasblairpe.com)

Steam Plant Fundamentals

Example 1: For saturated water at temperature of (212 °F);

- A. What is the enthalpy for a sample with 0% steam quality?
- B. What is enthalpy for sample with 100% steam quality?
- C. What is enthalpy for sample with 50% steam quality?
- D. What is pressure for above?

46



Energy Production Engineering
 Thomas Blair, P.E.
 (tom@thomasblairpe.com)

Steam Plant Fundamentals

Temp Fahr t	Abs Press. Lb per Sq in. p	Enthalpy		
		Sat. Liquid h _f	Evap h _{fg}	Sat. Vapor h _g
180.0	7.5110	148.00	990.2	1138.2
182.0	7.850	150.01	989.0	1139.0
184.0	8.203	152.01	987.8	1139.8
186.0	8.568	154.02	986.5	1140.5
188.0	8.947	156.03	985.3	1141.3
190.0	9.340	158.04	984.1	1142.1
192.0	9.747	160.05	982.8	1142.9
194.0	10.168	162.05	981.6	1143.7
196.0	10.605	164.06	980.4	1144.4
198.0	11.058	166.08	979.1	1145.2
200.0	11.526	168.09	977.9	1146.0
204.0	12.512	172.11	975.4	1147.5
208.0	13.568	176.14	972.8	1149.0
212.0	14.696	180.17	970.3	1150.5
216.0	15.901	184.20	967.8	1152.0

47



Energy Production Engineering
 Thomas Blair, P.E.
 (tom@thomasblairpe.com)

Steam Plant Fundamentals

Answer:

- A. From table, hf = 180.7 (BTU/lbm)
- B. From table, hg = 1150.5
- C. Using equation;
 $h(50\%) = 180.17 + 970.3 * (50/100) =$
 665 (BTU/lbm)
- D. Pressure is Psat = 14.7 psia

48



Energy Production Engineering
 Thomas Blair, P.E.
 (tom@thomasblairpe.com)

Steam Plant Fundamentals

Saturated steam also given with pressure instead of temperature
 SAME INFO

Abs Press. Lb/Sq In. p	Temp Fahr t	Specific Volume		
		Sat. Liquid v_f	Evap v_{fg}	Sat. Vapor v_g
0.08855	37.018	0.016022	3302.4	3302.4
0.25	58.323	0.016032	1735.5	1735.5
0.50	79.586	0.016071	641.5	641.5
1.0	101.74	0.016136	331.99	331.60
5.0	162.24	0.016407	73.515	73.332
10.0	193.21	0.016592	38.404	38.420
14.696	213.00	0.016719	26.782	26.799
15.0	213.03	0.016726	26.274	26.290

49



Energy Production Engineering
 Thomas Blair, P.E.
 (tom@thomasblairpe.com)

Steam Plant Fundamentals

Steam Tables – Superheated Steam sections - How to use:

50



Energy Production Engineering
 Thomas Blair, P.E.
 (tom@thomasblairpe.com)

Steam Plant Fundamentals

Table 3. Superheated Steam

Abs Press. Lb/Sq In. (Sat. Temp)	Sat. Water	Sat. Steam	Temperature – Degrees Fahrenheit			
			200	250	300	350 400
1 (101.74)	Sh		98.26	148.26	198.26	248.26 298.26
	v	0.01614	333.6	392.5	422.4	452.3 482.1 511.9
	h	69.73	1105.8	1150.2	1172.9	1195.7 1218.7 1241.8
	s	0.1326	1.9781	2.0509	2.0841	2.1152 2.1445 2.1722

Abs Press (psia) / Tsat also
 Sh = Superheat, F
 v = Specific Volume, (F³/lbm)
 h = enthalpy, (BTU/lbm)
 s = entropy, (BTU/(lbm * F))

51



Energy Production Engineering
 Thomas Blair, P.E.
 (tom@thomasblairpe.com)

Steam Plant Fundamentals

Table 3. Superheated Steam

Abs Press. Lb/Sq In. (Sat. Temp)	Sh	Sat. Water	Sat. Steam	Temperature – Degrees Fahrenheit			
				200	250	300	350 400
1 (101.74)	v	0.01614	333.6	392.5	422.4	452.3	482.1 511.9
	h	69.73	1105.8	1150.2	1172.9	1195.7	1218.7 1241.8
	s	0.1326	1.9781	2.0509	2.0841	2.1152	2.1445 2.1722

Sh, v, h, and s values given for
 - saturation conditions
 - various higher temps

52



Energy Production Engineering
 Thomas Blair, P.E.
 (tom@thomasblairpe.com)

Steam Plant Fundamentals

Example 2: For superheated steam at 400 °F at atmospheric pressure (14.7 psia);

- A. What is the enthalpy?
- B. What is amount of "Superheat"

53



Energy Production Engineering
 Thomas Blair, P.E.
 (tom@thomasblairpe.com)

Steam Plant Fundamentals

Table 3. Superheated Steam

Abs Press. Lb/Sq In. (Sat. Temp)	Sh	Sat. Water	Sat. Steam	Temperature – Degrees Fahrenheit			
				200	250	300	350 400
14.696 (121.00)	v	0.167	26.799	38.00	88.00	138.00	188.00
	h	180.17	1150.5	1168.8	1192.6	1216.3	1239.9
	s	3121	1.7568	1.7833	1.8158	1.8459	1.8743

A. Enthalpy is 1239.9 (BTU/lbm)
 B. Amount of "super heat" is 188 °F
 (note: this is given in table, but also can
 Calculate as 400 °F – 212 °F)

54



Energy Production Engineering
 Thomas Blair, P.E.
 (tom@thomasblairpe.com)

Steam Plant Fundamentals

Example 3: For **superheated steam** at 350 °F at atmospheric pressure (14.7 psia);

A. What amount of energy is required to raise 2 lbm of steam from 350 °F to 400 °F?

B. What is change in volume of that 2 lbm sample when it changes from 350 °F to 400 °F?

55



Energy Production Engineering
Thomas Blair, P.E.
(tom@thomasblairpe.com)

Steam Plant Fundamentals

Table 3. Superheated Steam

Abs. Press. Lb/Sq In. (Sat. Temp)	Sat. Water	Sat. Steam	Temperature – Degrees Fahrenheit				
			200	250	300	350 400	
14.696 (212.00)	Sh		38.00	88.00	138.00	188.00	
	v	0.167	26.799	28.42	30.52	32.40	34.67
	s	1.8017	1.7568	1.7833	1.8158	1.8459	1.8743

A. Energy = h * m
 = (1239.9 – 1216.3)(BTU/lbm) * 2(lbm)
 = 47.2 BTU
 B. (34.67 – 32.5)(F³/lbm) * 2(lbm)
 = 4.34 F³

56



Energy Production Engineering
Thomas Blair, P.E.
(tom@thomasblairpe.com)

Steam Plant Fundamentals

Why Enthalpy is important value!!!

Example 4: For **superheated steam** at 400 °F at atmospheric pressure (14.7 psia) that is flowing into a turbine at a rate of 100,000 lbs/hr

A. What is the ideal rate of energy delivery (POWER) into the turbine (excluding energy of exhaust)?

Energy/Time = Power = h * flow rate

57



Energy Production Engineering
Thomas Blair, P.E.
(tom@thomasblairpe.com)

Steam Plant Fundamentals

Table 3. Superheated Steam

Abs. Press. Lb/Sq In. (Sat. Temp)	Sat. Water	Sat. Steam	Temperature – Degrees Fahrenheit				
			200	250	300	350 400	
14.696 (212.00)	Sh		38.00	88.00	138.00	188.00	
	h	0.167	26.799	28.42	30.52	32.40	34.67
	s	1.8017	1.7568	1.7833	1.8158	1.8459	1.8743

A. Power = h * (m/t)
 = (1239.9)(BTU/lbm) * 100,000(lbm/hr)
 = 123.99 MBTU/hr

58



Energy Production Engineering
Thomas Blair, P.E.
(tom@thomasblairpe.com)

Steam Plant Fundamentals

Why Enthalpy is important value!!!

Example 5: For the system described in example 4, if the turbine exhaust steam is at 1 psia, saturated steam conditions, steam quality of 90%, what is net power delivered to the turbine by the steam?

From example 4, enthalpy into turbine was (1239.9)(BTU/lbm)

59



Energy Production Engineering
Thomas Blair, P.E.
(tom@thomasblairpe.com)

Steam Plant Fundamentals

Abs. Press. Lb/Sq In. p	Temp Fahr t	Sat. Liquid h _f	Enthalpy	
			Evap h _{fg}	Sat. Vapor h _g
0.00005	32.018	0.0003	1075.5	1075.5
0.0001	38.018	0.001	1062.1	1062.1
0.001	39.836	0.002	1048.6	1048.6
0.01	41.794	0.005	1035.1	1035.1
0.1	43.74	0.009	1021.6	1021.6
1.0	45.79	0.017	1008.1	1008.1
10.0	47.91	0.032	994.6	994.6
100.0	49.16	0.058	981.1	981.1
1000.0	50.0	0.101	967.6	967.6

A. hf = 69.73 & hfg = 1036.1
 h = hf + hfg * (%quality/100%)
 = 69.73 + 1036.1 * (90/100)
 = 1002.22 (BTU/lbm) = enthalpy out of turbine.

60



Energy Production Engineering
Thomas Blair, P.E.
(tom@thomasblairpe.com)

Steam Plant Fundamentals

Net enthalpy drop is 1239.9 – 1002.22

= 237.68 (BTU/lbm)

Given that mass flow is 100,000 lbm/hr

Net power delivered to turbine is

237.68 BTU/lbm * 100,000 lbm/hr =

23.768 MBTU/hr



Energy Production Engineering
Thomas Blair, P.E.
(tom@thomasblairpe.com)

61

Steam Plant Fundamentals

If we define efficiency (ignoring pump work) as;

$P(\text{turb})_{\text{out}} / P(\text{turb})_{\text{in}} * 100\%$, efficiency of this turbine is;

$(23.768/123.99) * 100\% =$

19.2% efficient

Perhaps this is why we do not run turbines at atmospheric pressure



Energy Production Engineering
Thomas Blair, P.E.
(tom@thomasblairpe.com)

62

Steam Plant Fundamentals

Previous steam fundamentals critical to understand –

Practice using steam tables.



Energy Production Engineering
Thomas Blair, P.E.
(tom@thomasblairpe.com)

63

Steam Plant Fundamentals

Ideal Gas Law – approximation for steam

$PV = nRT$ or

$PV/T = \text{constant}$

Therefore

$P_1V_1/T_1 = P_2V_2/T_2$



Energy Production Engineering
Thomas Blair, P.E.
(tom@thomasblairpe.com)

64

Steam Plant Fundamentals

Ideal Gas Law Continued – $PV/T = \text{const}$

With V constant, if you raise T, you raise P.

With P constant, if you raise T, you raise V.



Energy Production Engineering
Thomas Blair, P.E.
(tom@thomasblairpe.com)



65

Steam Plant Fundamentals

To be continued ...



Energy Production Engineering
Thomas Blair, P.E.
(tom@thomasblairpe.com)

<p>Energy Production Systems Engineering</p>	
<p>Thomas Blair, P.E. USF Polytechnic – Engineering tom@thomasblairpe.com</p>	
	<p>End of Session 2: Electrical Safety & Steam Plant Fundamentals</p>
<p>Spring 2012</p>	